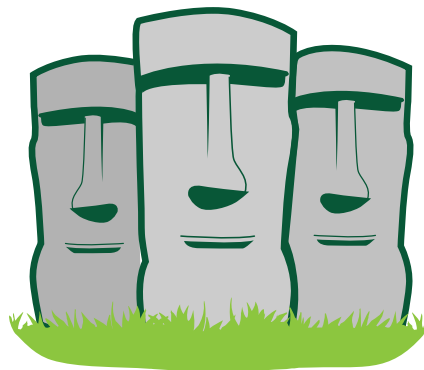




# catalogue 2018/19



**GORSE LODGE**

IMAGINED, DESIGNED & CRAFTED FOR YOUR GARDEN

*...authentic garden decoration*

## *Selamat Datang! Welcome!*

In this catalogue we concentrated on keeping everything nice and compact with our most popular products.

As our "home base" in Germany, may be a bit far for you to visit (of course you're still welcome!), our website [www.asiastyle.eu](http://www.asiastyle.eu) has lots to show as well.

Ever since our first trip to Indonesia back in 2001, Asian inspired garden design has been our mission.

We welcome you to look through the following pages, and discover what we have to offer!

Gorse Lodge Garden Ornaments is the sole distributor for AsiaStyle in Ireland and the UK.

*Best regards  
Your Asiastyle team*

## Garden decoration of stone

from classic to modern

Natural stone fountain	4
Planters and troughs	8
Mini ponds and water bowls	10
Garden ornaments and objects	11
The Petrified Tiergarten	14
The fossilized dragon	16

## Asian stone art

Khmer heads <i>perfectly staged</i>	18
Further water features in the asia style	22
Accessories for water features	24
Japanese Buddha	26
Other Buddha statues	27
River Stone Statues - our master class	30
Other Buddha statues made of cast stone	32
Monks	36
Elephant God Ganesha	38
Japanese lanterns and more	40
Chinese warriors and more	42

## Moai, the stone colossi of the Easter Island Moai sculptures

Moai sculptures 44

Sound and wind games	
Bamboo wind chimes	46

Bamboo	
Bamboo tubes and elements	47

Material Science and Information	48
Production	50

A photograph of a shallow, wide stone planter filled with lush green plants. The planter is made of a light-colored, textured stone. In the background, there are larger, more complex stone structures, possibly part of a garden wall or a fountain, made of similar stone. The lighting is bright, suggesting a sunny day.

# Garden decoration made of stone

*from classic to modern*

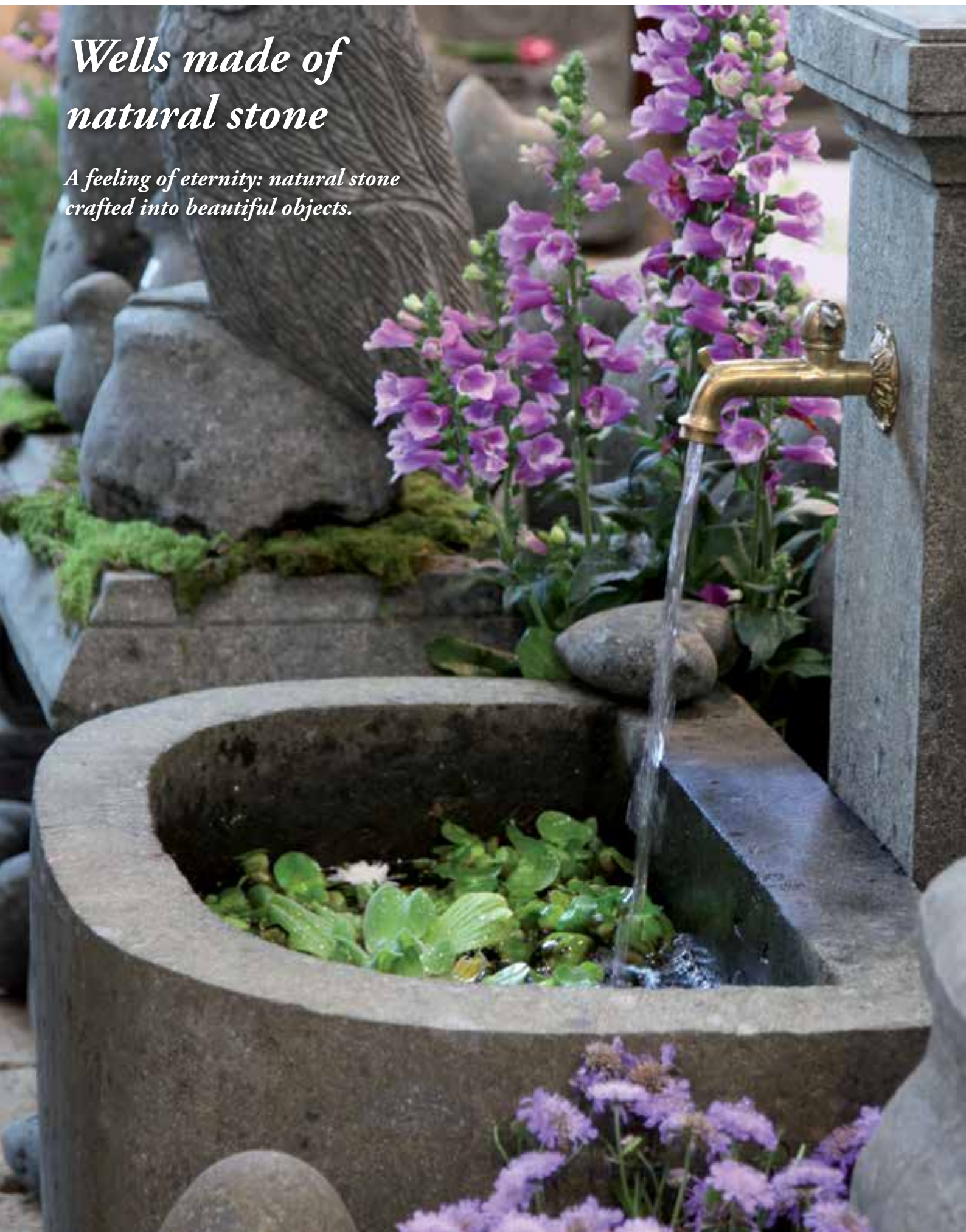
**You want to make your garden more beautiful?**

Discover the many ways to decorate with our wells, troughs and planters made of natural stone. Every one of our products is uniquely hand-made! Create your own little outdoor paradise with decoration made of high-value crafted or pressed stone. Bring life to even the duller corner in your garden, and give it its very own character with solid stools, tables, benches and chairs.



# *Wells made of natural stone*

*A feeling of eternity: natural stone  
crafted into beautiful objects.*



Who does not know, the charm of old natural stone wells on the village square? Even though wells have not been necessary as a social meeting point for water supply since the introduction of tap water, they still exert a tremendous attraction in cities and villages with their

cascades and fountains.

Water meets natural stone - the idea of a refreshing, clear mountain spring: Get this feeling of life in your garden!



#### Well<sup>1</sup>

well model „Genua“, complete set including a pump, tap, copper tubing, drilled holes etc., approx. 120 cm H | natural stone (crafted stone), stonemason's work

article no.	approx. size   approx. weight	RRP
CST-WS-120NA	80x70x120 cm   450 kg	1.398,00 £

<sup>1</sup> For objects made of crafted stone that are used in combination with water we recommend hydrophobicity for the stones.





**Wall-mounted well<sup>1</sup>**  
wall-mounted well model "Venice", complete set including a pump, tap, copper tubing, rilled holes etc., approx. 120 cm and 160 cm H | natural stone (crafted stone), stonemason's work

article no.	approx. size   approx. weight	RRP
CST-WS-LION-120NA	65 x 60 x 120 cm   315 kg	1.179,00 £
CST-WS-LION-140NA	70 x 80 x 140 cm   500 kg	1.349,00 £
CST-WS-LION-160NA	95 x 75 x 160 cm   685 kg	1.629,00 £

<sup>1</sup> For objects made of crafted stone that are used in combination with water we recommend hydrophobicity for the stones.



**Standbrunnen Verona<sup>1</sup>**

well model "Verona", complete set including a pump, tap, copper tubing, drilled holes etc., approx. 120 cm H | natural stone (crafted stone), stonemason's work

article no.	approx. size   approx. weight	RRP
CST-WS3A-080NA	70 x 60 x 80 cm   160 kg	1179,90 £
CST-WS3A-120NA	75 x 70 x 120 cm   450 kg	1.279,00 £



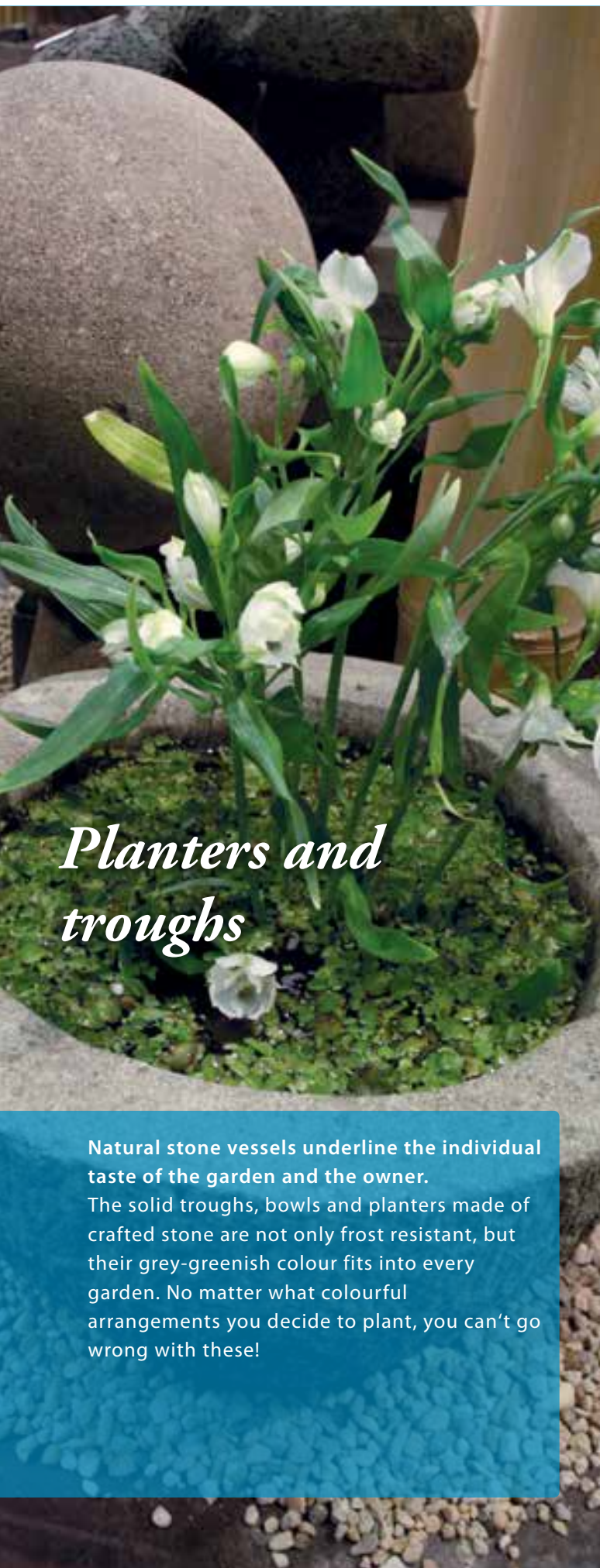
**Well<sup>1</sup>**

well model "Bozen", complete set including a pump, tap, copper tubing, drilled holes etc., approx. 85 cm H | natural stone (crafted stone), stonemason's work

article no.	approx. size   approx. weight	RRP
CST-WS3-080NA	70 x 60 x 80 cm   160 kg	745,90 £
CST-WS3-120NA	50 x 75 x 120 cm   450 kg	1.279,00 £

For items made of natural stone, there may be deviations from the illustration | Illustration and size may vary slightly.





## *Planters and troughs*

Natural stone vessels underline the individual taste of the garden and the owner. The solid troughs, bowls and planters made of crafted stone are not only frost resistant, but their grey-greenish colour fits into every garden. No matter what colourful arrangements you decide to plant, you can't go wrong with these!



I



II

### **Trough<sup>1</sup>**

trough, round, bossed outer surface, approx. 40 cm and 47 cm Ø | natural stone (crafted stone), stonemason's work

article no.	approx. size   approx. weight	RRP
I CST-TR3-047x030RO	Ø 47 x 30 cm   64 kg	189,90 £
II CST-TR7-040x020SM	Ø 40 x 20 cm   32 kg	132,90 £



### **Planter<sup>1</sup>**

natural hollowed out | Natural stone (boulder), honed, polished

article no.	approx. size   approx. weight	RRP
RS-POT10-070X080X035	70 x 80 x 35 cm H   200 kg	398,00 £





*All a question of style  
Exclusive stone vessels for your  
culinary herbs*

More and more kitchen herbs are today in health food stores and supermarkets. For the stylish storage of your tasty greens, we have our vessels. These planters are identified by the "herb pot" label and are suitable for this format.



*herb pot*

**Planter<sup>1</sup>**

Planter, rectangular, smooth, 29 cm L, fits two 12s Pots | Natural stone (basanite), stonework

article no.	approx. size   approx. weight	RRP
CST-MOD40-2P12	29 x 16 x 15 cm   10,25 kg	46,50 £



II



III



I

**Stone shell<sup>1</sup>**

smooth surface, available in 3 sizes: 25 cm, 30 cm and 40 cm | Natural stone (boulder), ground

article no.	approx. size   approx. weight	RRP
I RS-BOWL02-025x020x6	25 x 20 x 6 cm   4,5 kg	22,90 £
II RS-BOWL02-030x025x8	30 x 25 x 8 cm   6,5 kg	29,90 £
III RS-BOWL02-040x030x8	40 x 30 x 8 cm   8,5 kg	42,90 £



<sup>1</sup> Please note that all planters have an outlet need to ensure frost resistance in winter.

<sup>2</sup> Fits 12 pots



**Bowl<sup>1,2</sup>**

Shell model "Lotus", embossed outer surface, 50 cm Ø, 75 cm Ø, 100 cm Ø and 125 cm Ø | Natural stone (basanite), stonework

article no.	approx. size   approx. weight	RRP	article no.	approx. size   approx. weight	RRP
CST-TR5-050x015RO	Ø 50 x 15 cm   20 kg	106,90 £	CST-TR5-100x030RO	Ø 100 x 30 cm   170 kg	659,00 £
CST-TR5-075x025RO	Ø 75 x 20 cm   70 kg	239,90 £	CST-TR5-125x040RO	Ø 125 x 40 cm   264 kg	939,00 £



I



I



II

**Mini pond, stone vessel**

Outside natural, hollowed out, available in 4 sizes | Natural stone (boulder), honed, polished

	article no.	approx. size   approx. weight	RRP
I	RS-POND01-S016	U 101 – 134 x 16 cm H   12 kg	109,90 £
II	RS-POND01-M016	U 135 – 165 x 16 cm H   20 kg	139,90 £
	RS-POND01-L030	U 166 – 195 x 30 cm H   80 kg	229,90 £

1 For objects made from basanite, which are used as a water container, you should make the stone hydrophobic before.





# Garden ornaments and objects

## You want to impress with a small garden?

Discover the variation of our extraordinary objects. You'll find classic statues inspired by the Renaissance up to the modern days, and abstract figures that fit into any garden. The artful stonemason's work brings to you statues of frost resistant crafted stone that will find a spot in your garden, balcony or terrace.



### Abstract head

Abstract head, hollowed out for planting, 60 and 80 cm H | natural stone (basanite), stonework

article no.	approx. size   approx. weight	RRP
CST-ABSTHEAD-080NA	60x50x80 cm   138 kg	409,90 £



### Stone bench with decorations<sup>1</sup>

Stone bench with ornaments (3-part), 120 cm L | Natural stone (basanite), stonework

article no.	approx. size   approx. weight	RRP
CST-BENCH-01NA	120x35x45 cm   250 kg	563,90 £



### Abstract hand

Abstract hand, object also for sitting (left) 100 cm H or object also for sitting (right) 100 cm H | Natural stone (basanite), stonework

article no.	approx. size   approx. weight	RRP
CST-HANDCHAIRL-100NA	48x62x100 cm   302 kg	749,00 £



### Garden deco ball

Garden deco ball, in 20 cm Ø, 25 cm Ø, 30 cm Ø, 35 cm Ø | Natural stone (basanite), stonework

article no.	approx. size   approx. weight	RRP
CST-BALL-020NA	Ø 20 x 20 cm   8,5 kg	29,90 £
CST-BALL-025NA	Ø 25 x 25 cm   15 kg	43,90 £
CST-BALL-030NA	Ø 30 x 30 cm   42 kg	89,90 £
CST-BALL-035NA	Ø 35 x 35 cm   55 kg	119,90 £

<sup>1</sup> For multi-part articles we recommend to glue these at the destination.



#### Heart object

Heart object, 8 cm L, 10 cm L, 15 cm L, 20 cm and 25 cm L |  
Natural stone (basanite), stonework

article no.	approx. size   approx. weight	RRP
CST-HEART-008NA	8 x 8 x 4 cm   0,3 kg	3,90 £
I CST-HEART-010NA	10 x 10 x 4 cm   0,5 kg	4,90 £
II CST-HEART-015NA	15 x 15 x 6 cm   1,3 kg	7,80 £
III CST-HEART-020NA	20 x 20 x 8 cm   3 kg	17,50 £
CST-HEART-025NA	25 x 26 x 9 cm   5,8 kg	24,90 £



*New*

#### Abstract hands

Abstract sculpture from 2 hands, 102 cm H | Stone casting, hand  
finished & colored

article no.	approx. size   approx. weight	RRP
P-2HANDS-100AF	46 x 36 x 102 cm   109 kg	329,00 £







# The petrified zoo



Our virtuoso animal depictions range from the graceful cat to the imposing dragon. Put individual accents in your garden landscape!

*New*



## Classic Koi<sup>1</sup>

Classic Koi, 55 cm L | Stone casting, hand finished & colored

article no.	approx. size   approx. weight	RRP
P-FISH04-055AF	17 x 55 x 26 cm   23 kg	69,90 £



## Fish, Koi<sup>1</sup>

Fish, 25 cm and 43 cm L | Stone casting, hand finished & colored

article no.	approx. size   approx. weight	RRP
P-FISH04-025AF	25 x 8 x 11 cm   2 kg	16,50 £
P-FISH04-043AF	43 x 17 x 21 cm   5 kg	34,50 £

*New*



## Japanese Koi<sup>1</sup>

Japanese Koi, 60 cm L | Stone casting, hand finished & colored

article no.	approx. size   approx. weight	RRP
P-FISH-060AF	18 x 61 x 23 cm   22,5 kg	94,90 £



## Fish on a small pedestal<sup>1</sup>

Fish on a small base, 25 cm L and 40 cm L | Stone casting, hand finished & colored

article no.	approx. size   approx. weight	RRP
I P-FISH-025AF	25x9x10 cm   1,5 kg	14,50 £
II P-FISH-040AF	40x13x16 cm   4 kg	25,50 £

<sup>1</sup> The colorations vary and may fade as a result of weathering.





I



II

### Water bowl with fish<sup>1</sup>

Water bowl with 2 fish, 40 cm or 50 cm Ø, | Stone casting, hand finished & colored

article no.	approx. size   approx. weight	RRP
P-BOWL2FISH-040x013AF	Ø 40 x 13 cm   21,5 kg	94,90 £
I P-BOWL2FISH-050x016AF	Ø 50 x 16 cm   26,5 kg	119,90 £



### Frog prince<sup>1</sup>

Frog prince on ball, about 55 cm H | Stone casting, hand finished & colored

article no.	approx. size   approx. weight	RRP
PL-FROGPRINCE02-055AF	34 x 28 x 55 cm   24 kg	98,90 £



### Turtle<sup>1</sup>

Tortoise, 33 cm L | Stone casting, hand finished & colored

Article no.	approx. size   approx. weight	RRP
P-TO01-033AF	30 x 25 x 17 cm   8,4 kg	41,90 £



### Sitting piggy<sup>1</sup>

Sitting pig, 20 cm H | Stone casting, hand finished & colored

Article no.	approx. size   approx. weight	RRP
P-PIG-020AF	23 x 13 x 20 cm   6,9 kg	25,50 £



### Turtle<sup>1</sup>

Turtle, 60 cm L | Stone casting, hand finished & colored

Article no.	approx. size   approx. weight	RRP
P-TO01-060AF	62 x 45 x 25 cm   26 kg	129,90 £



# The petrified Dragon



*New*

## Gargoyle<sup>1</sup>

Sitting Gargoyle, approx. 100 cm H | Stone casting, hand finished & colored

Article no.	approx. size   approx. weight	RRP
P-GOTHIC02-100AF	60 x 76 x 98 cm   212,5 kg	598,00 £



*New*

## Sitting dragon on stone<sup>1</sup>

Seat. Dragon on stone, ca. 65 cm H, right or left | Cast stone, hand-refined & colored

Article no.	approx. size   approx. weight	RRP
I PL-SDRAGON03RE-065AF	70 x 55 x 35 cm   61 kg	259,00 £
II PL-SDRAGON03LI-065AF	70 x 55 x 35 cm   61 kg	259,00 £



## Chinese luck dragon on pedestal

Chinese Lucky Dragon on Pedestal, 110 cm L | Natural stone (basanite), stonework

Article no.	approx. size   approx. weight	RRP
CST-DRAGON2-110NA	110 x 30 x 50 cm   106 kg	469,00 £



## Sitting and lying dragon on stone<sup>1</sup>

Seat. Dragon on stone, ca. 75 cm H, lying dragon on stone, about 50 cm L | Stone casting, hand finished & colored

Article no.	approx. size   approx. weight	RRP
I PL-DRAGON01-075AF	25 x 40 x 75 cm   40,3 kg	145,90 £
II P-LYDRAGON02-050AF	50 x 40 x 32 cm   47 kg	129,00 £



## Lucky dragon standing on pedestal

Dragon standing on pedestal, 50 cm H | Natural stone (boulder) stonework

Article no.	approx. size   approx. weight	RRP
RS-STDRAGON02-050NA	30 x 16 x 50 cm   27 kg	259,00 £

<sup>1</sup> The colorations vary and may fade as a result of weathering.



*The beauty of a hand-cut sculpture is not only in the eye of the beholder, but also in its imperfection. We would like to point out that the sculpture may have flaking in the base area, for example. Inclusions of different colored rock types are a testimony to their uniqueness. Just as few people are perfect, hand-cut statues have “rough edge“, which is exactly what makes their charm.*

## Asian stone art

With the import of a large Buddha bust from Ubud (Bali) in the Year 2001 began our company history. The first years were mainly dedicated to the theme of “beautiful Buddha statues“. For this reason, you will find one of the largest ranges of handmade Buddha sculptures in Germany. Part of this is presented in this catalog. Whether from boulder stone, basanite or hand-finished stone casting: our special focus is still on the selection of beautiful specimens. This in combination with the right materials is our guarantee that you enjoy your artwork for a long time.





# *Khmer heads perfectly staged*

Our Khmer heads are impressive in their timeless mystical charisma, whose role models can be found in the Cambodian temples of Angkor Wat.

It gets really impressive with permanently running water, which flows softly over the face and provides a wonderfully lively picture. An attractive lighting underlines the whole thing. A fascinating sight.









65 cm Height



#### Khmer head <sup>1, 2, 3, 4</sup>

Khmer head as water feature, 65 cm H | Stone casting, hand finished & colored

Article no.	approx. size   approx. weight	RRP
PL-WGKH-070AF <sup>4</sup>	46 x 39 x 65 cm   50 kg	272,90 £

75 cm Height



#### Khmer head with pedestal <sup>1, 2, 3, 4</sup>

Khmer head with pedestal as water feature, 75 cm H | Stone casting, hand finished & colored

Article no.	approx. size   approx. weight	RRP
PL-WGKH02-075AF <sup>4</sup>	32 x 53 x 75 cm   69,5 kg	274,90 £





85 cm Height



II

**Khmer-head stone casting** <sup>1, 2, 3, 4</sup>

Khmer head as a water feature, 85 cm H and Khmer head with pedestal as water feature | Stone casting, hand-finished & colored

Article no.	approx. size   approx. weight	RRP
I PL-WGKH-085AF <sup>4</sup>	60x40x84 cm   91 kg	339,90 £
II PL-WGKH03-085AF <sup>4</sup>	36 x 46 x 85 cm   97 kg	314,90 £



I

i

**Suitable accessories**  
for the Khmer heads  
see page 24

**Khmer head** <sup>1, 2, 3</sup>

Khmer head as a water feature, 147 cm H | Stone casting, hand finished & colored

Article no.	approx. size   approx. weight	RRP
P-WGKH02-147af	93 x 60 x 147 cm   177 kg	759,00 £



147 cm Height

3 The colorations vary and may fade as a result of weathering.

4 Manufactured to save weight in the hollow casting process.



*Further water features in the Asian style*

*New*



**Sitting Buddha with cup<sup>1</sup>**  
Seated Buddha with bowl 50 cm H as water feature | Stone casting, hand finished & colored

Article no.	approx. size   approx. weight	RRP
P-WGSB-050BAF	37 x 24 x 51 cm   31,5 kg	109,90 £



**Buddha head<sup>2,3,4</sup>**  
Buddha head as water feature, 50 cm H, 75 cm H, 100 cm H and 125 cm H | Stone casting, hand finished & colored

Article no.	approx. size   approx. weight	RRP
I PL-WGBH01-050AF	35 x 32 x 50 cm   17 kg	106,90 £
II PL-WGBH01-075AF	48 x 47 x 75 cm   53 kg	269,90 £
PL-WGBH01-100AF	75 x 72 x 100 cm   139 kg	539,00 £
PL-WGBH01-125AF	82 x 80 x 132 cm   173 kg	714,90 £

1 In frost, make sure that the water features are completely emptied.

2 With pre-installed adapter for hose connection 1/3 or 1/4 inch and matching hose





i

**Suitable accessories**  
for the water features  
see page 24



#### Abstract head

Abstract head, as water feature or also hollowed out for planting,  
50 and 100 cm H | Stone casting, hand finished & colored

Article no.	approx. size   approx. weight	UVP
PL-WG-ABSTHEAD02-050AF	36 x 30 x 49 cm   67,5 kg	209,00 £
PL-WG-ABSTHEAD02-100AF	60 x 45 x 100 cm   177,5 kg	489,00 £

#### Standing Dewi Sri<sup>2,3</sup>

Standing Dewi Sri as water feature, 123 cm H | Cast stone,  
hand-refined & colored

Article no.	approx. size   approx. weight	RRP
P-SDP-123AF	35 x 28 x 123 cm   92,5 kg	214,90 £



#### Genasharelieff as a water feature<sup>1,2,3</sup>

Ganesharelieff as water feature, without basin, 120 cm H |  
Stone casting, hand finished & colored

Article no.	approx. size   approx. weight	RRP
P-WG-REGA2-120AF	90 x 20 x 120 cm   125 kg	449,00 £



#### Buddha relief as a water feature<sup>1,2,3</sup>

Buddha relief as water feature, without basin, 170 cm H |  
Stone casting, hand finished & colored

Article no.	approx. size   approx. weight	RRP
P-WG-REBH02-170AF	40 x 112 x 170 cm   210 kg	709,00 £

<sup>3</sup> The colors vary and may fade as a result of weathering.

<sup>4</sup> For weight saving manufactured by hollow casting.

# Water Accessories

Items	<div> <div>Open Pool</div> <div>Rectangular Basin</div> <div>GFK-POND01-085X65X2051</div> <div>85 x 65 x 20 cm</div> <div>Fibre Cement</div> </div> <div> <div>Open Pool</div> <div>Rectangular Basin</div> <div>GFK-POND02-130X90X2051</div> <div>130 x 90 x 20 cm</div> <div>Fibre Cement</div> </div> <div> <div>Counter-sink</div> <div>Rectangular Basin</div> <div>GRC-B140X070X035</div> <div>130 x 90 x 20 cm</div> <div>GFK "Fiberglas"</div> </div> <div> <div>Closed Pool Possible</div> <div>Rectangular Cover Plate</div> <div>GRC-APE110110</div> <div>110 x 110 cm</div> <div>GFK "Fiberglas"</div> </div> <div> <div>Rectangular Cover Plate</div> <div>GRC-B110110</div> <div>110 x 110 cm</div> <div>GFK "Fiberglas"</div> </div> <div> <div>Closed Pool Possible</div> <div>Round Basin</div> <div>GRC-B090HD</div> <div>Ø 90 cm x 33 cm</div> <div>GFK "Fiberglas"</div> </div>					
	319,00 £	439,00 £	239,00 £	339,00 £	399,00 £	161,90 £
PL-WGKH-075AF	x					x
PL-WGKH02-075AF	x					x
PL-WGKH-085AF	x					x
PL-WGKH03-085AF	x					x
P-WGKH02-147af		x	x	x	x	
P-WGSB-050BAF	x					x
PL-WG-ABSTHEAD02-050AF						
PL-WG-ABSTHEAD02-100AF						
PL-WGBH01-050AF	x					x
PL-WGBH01-075AF	x					x
PL-WGBH01-100AF		x		x	x	
PL-WGBH01-125AF		x		x	x	
P-WG-STB-150BAF		x		x	x	
P-SDP-123AF		x		x	x	
P-WG-REBH02-170AF		x		x	x	



half round basin made of fiberglass fiberglass



Round Basin, made of fiberglass fiberglass



Closed basin made of fiberglass





Round Cover Plate GRC-AP090HD Ø 90 cm cm GFK "Fiberglas"	<i>Closed Pool Possible</i> Semicircular Basin GRC-B092 81 x 68 x 36,5 cm GFK "Fiberglas"	Semicircular Cover Plate GRC-D092 90,5 x 73 x 5 cm Fibre Cement	Load carrier GFK "Fiberglas"	Pump PUMP-1000P /-1500P	Pump PUMP-1500P /-1100A	Pumpe PUMP-2000P /-2200A	Equipment DL-VERB-H2O Hose and hose clamp	LED Spotlight Set 1 spotlight (3 watts), transformer (10 watts), Connecting cable, foot, ground spike, etc LED-AQUASpot-SET	LED Spotlight, Extension Set (1 spotlight plus connecting cable) LED AQUA SPOT ERW
98,90 £	161,90 £	98,90 £	63,90 £	53,90 £	53,90 £	79,90 £	3,90 £	99,90 £	89,90 £
x	x	x	x	x			x	x	x
x	x	x	x	x			x	x	x
x	x	x	x		x		x	x	x
x	x	x	x		x		x	x	x
			x			x	x	x	x
x	x	x		x				x	x
								x	x
								x	x
x	x	x		x				x	x
x	x	x		x				x	x
					x			x	x
						x		x	x
						x		x	x
						x		x	x
						x		x	x



Open, sanded pool made of GRP  
fiberglass



Ex. Khmer head with LED spot

# Japanese Buddha “Kamakura”



In Japan, the two most famous Buddha statues (Daibutsu): in Nara and Kamakura. The latter gave us the inspiration for our Japanese Buddha. The biggest visual difference to the Indian Buddha and thus the best recognition factor, is the loose over both shoulders hanging robe and the position of the thumb.



## Sitting Buddha

Sitting Buddha, Japanese, 75 cm and 100 cm H | natural stone (Basanite), stonework

Article no.	approx. size   approx. weight	RRP
I CST-SB7-075ENA	35 x 50 x 75 cm   115 kg	342,90 £
II CST-SB7-100ENA	50 x 65 x 100 cm   224 kg	598,90 £



## Sitting Buddha

Sitting Buddha, Japanese, 150 cm H | Natural stone (basanite), stonework

Article no.	approx. size   approx. weight	RRP
CST-SB7-150ENA	70 x 100 x 150 cm   870 kg	1.890,00 £





# Further Buddha Statues made of natural stone

At the heart of our assortment are the extraordinarily beautiful sculptures. In the case of the Buddha figures, we are less concerned with idolatry. Rather, they stand as a symbol of centering, wisdom and enlightenment.



**Sitting Buddha with hand pose A, C, E**

Seated Buddha, Indian, 75 cm H | Natural stone (basanite), stonework

Article no.	approx. size	approx. weight	RRP
CST-SB-075ANA	42 x 30 x 75 cm	90 kg	329,90 £
CST-SB-075CNA	42 x 30 x 75 cm	90 kg	329,90 £
I CST-SB-075ENA	42 x 30 x 75 cm	90 kg	329,90 £

II



I

**Sitting Buddha with hand posture A, C, E**

Seated Buddha, Indian, 100 cm H | Natural stone (basanite), stonework

Article no.	approx. size	approx. weight	RRP
I CST-SB-100ANA	46 x 50 x 100 cm	212 kg	474,90 £
CST-SB-100ENA	46 x 50 x 100 cm	212 kg	474,90 £

## Hand postures mudras

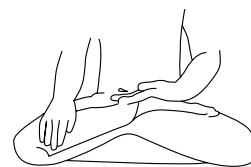
From stock we do not offer all mudras. If you have a special desire in the execution of a figure, we help you with the implementation.



A  
Greetings



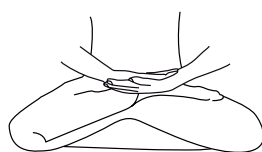
C  
Wheel of Teaching



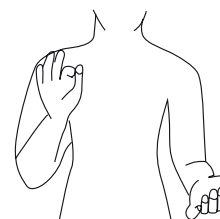
F  
Earth contact



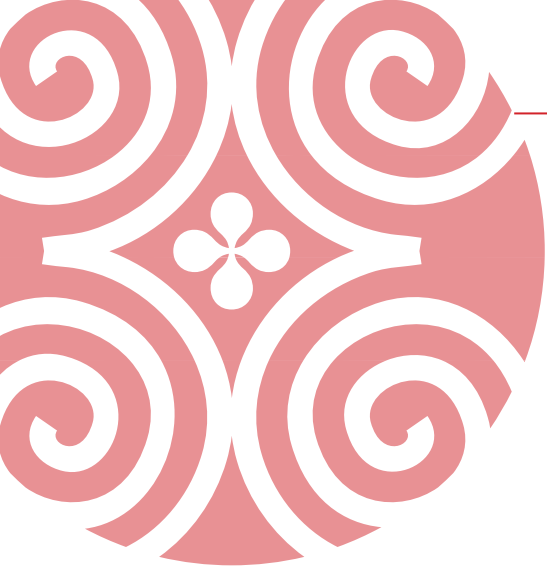
B  
Vessel



E  
Meditation



G  
Teaching gesture



I

**Sitting Buddha with hand posture A, C, E**  
Seated Buddha, Indian, 150 cm H | Natural stone (basanite), stonework

Article no.	approx. size   approx. weight	RRP
I CST-SB-150ANA	70x90x150 cm   350 kg	1.839,00 £
CST-SB-150ENA	70x90x150 cm   350 kg	1.839,00 £



II



I

**Buddha bust**  
Buddha bust, 80 cm and 150 cm H | Natural stone (basanite), stonework

Article no.	approx. size   approx. weight	RRP
I CST-BB-080NA	45x35x80 cm   192 kg	354,90 £
II CST-BB-150NA	55x45x150 cm   440 kg	849,00 £





i

**Other sizes**  
All models are  
available on request.

**Standing Buddha**

Standing Buddha, Indian, 120 and 150 cm H | Natural stone (basanite), stonework

Article no.	approx. size   approx. weight	RRP
<sup>I</sup> CST-STB-120ANA	25 x 30 x 120 cm   80 kg	289,90 £
<sup>II</sup> CST-STB-150ANA	32 x 37 x 150 cm   125 kg	419,00 £

**Standing Buddha**

Standing Buddha, Indian, 175 cm H | Natural stone (basanite), stonework

Article no.	approx. size   approx. weight	RRP
CST-STB-175ANA	40 x 45 x 175 cm   205,5 kg	599,00 £

## *River Stone - Our Master class*

The sculptures of river stone can be seen at first glance the high quality. The hardness of this granite-like rock makes a particularly detailed elaboration possible. The artists can thus prove their abilities even more and transfer them to the objects. The sculptures thus gain more power and expression, which makes them appear interesting to the viewer over a longer period of time.



*New*



### **Buddha bust**

Buddha bust, 80 cm H | Natural stone (boulder), stonework

### **Article no.**

RS02A-BB080NA

**approx. size | approx. weight**

40 x 40 x 80 cm | 130 kg

### **RRP**

598,00 £





*New*



**Seated Buddha with hand posture G (Abudaya)**

Seated Buddha with floral patterns, 80 cm and 100 cm H | Natural stone (boulder), stonework

Article no.	approx. size   approx. weight	RRP
RS02A-SB080GNA	60 x 35 x 80 cm   132 kg	729,90 £
RS02A-SB100GNA	68 x 42 x 100 cm   238,5 kg	979,00 £



*New*

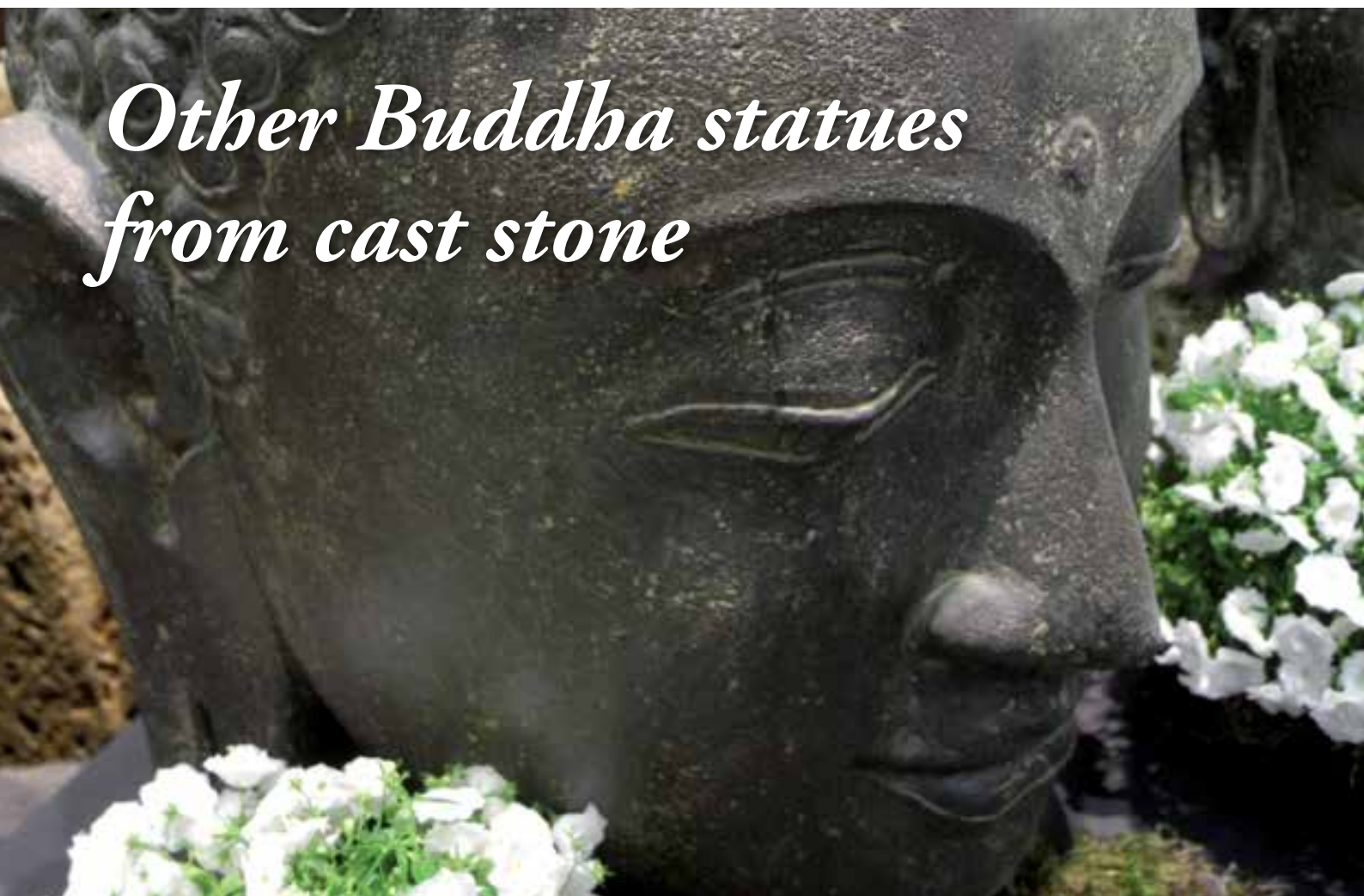


**Standing Buddha with hand posture G**

Standing Buddha with floral patterns, 150 cm and 175 cm H | Natural stone (boulder), stonework

Article no.	approx. size   approx. weight	RRP
I RS02A-STB150GNA	37 x 32 x 152 cm   202 kg	824,90 £
II RS02A-STB175GNA	37 x 39 x 175cm   290 kg	1.259,00 £

# *Other Buddha statues from cast stone*



## **Sitting Buddha**<sup>1,2</sup>

Seated Buddha, Indian, 80 cm H | Stone casting, hand finished & colored

Article no.	approx. size   approx. weight	RRP	Article no.	approx. size   approx. weight	RRP
I P-SB-060AAF	42 x 30 x 60 cm   50,5 kg	146,90 £	III PL-SB-080FAF	55 x 45 x 80 cm   43 kg	263,90 £
II P-SB-060EAF	42 x 30 x 60 cm   50,5 kg	146,90 £	PL-SB-080EAF	55 x 45 x 80 cm   43 kg	263,90 £

<sup>1</sup> The colors vary and may fade as a result of weathering.

<sup>2</sup> manufactured for weight saving in the hollow casting process.



**Sitting Buddha<sup>1</sup>**

Sitting Buddha, Indian, 45 cm H | Stone casting, hand-finished & colored

Article no.	approx. size   approx. weight	RRP
I P-SB-045AAF	30x23x46 cm   20 kg	78,90 £
II P-SB-045FAF	30x23x46 cm   20 kg	78,90 £

**Head<sup>1,2</sup>**

Buddha head, 30 cm, 50 cm, 75 cm, 100 cm H | Cast stone, hand-refined & colored

Article no.	approx. size   approx. weight	RRP
I PL-BH-030AF <sup>2</sup>	28 x 23 x 34 cm   7 kg	41,90 £
PL-BH-050AF <sup>2</sup>	35 x 32 x 50 cm   15 kg	94,90 £
II PL-BH-075AF <sup>2</sup>	48 x 48 x 75 cm   53 kg	249,00 £
PL-BH-100AF <sup>2</sup>	82 x 80 x 100 cm   139 kg	499,00 £

**Sitting Buddha<sup>1,2</sup>**

Seated Buddha, Indian, 100 cm H | Cast stone, hand-refined & colored

Article no.	approx. size   approx. weight	RRP
PL-SB-100EAF	66 x 46 x 100 cm   100 kg	363,90 £

**Sitting Buddha<sup>1,2</sup>**

Seated Buddha, Indian, 150 cm and 200 cm H | Stone casting, hand finished & colored

Article no.	approx. size   approx. weight	RRP
PL-SB-150AAF	107 x 78 x 150 cm   288 kg	1.179,00 £
I PL-SB-200AAF	144 x 100 x 200 cm   620 kg	2.595,00 £



I

#### Standing Buddha<sup>1</sup>

Standing Buddha, Indian, 119 cm H | Cast stone, hand-refined & colored

Article no.	approx. size   approx. weight	RRP
P-STB-119AAF	36x28x119 cm   75 kg	219,00 £
I P-STB-119CAF	36x28x119 cm   75 kg	219,00 £



I

II

#### Standing Buddha<sup>1</sup>

Standing Buddha, Indian, 158 cm H | Stone casting, hand finished & colored

Article no.	approx. size   approx. weight	RRP
I P-STB-158AAF	44x35x158 cm   148 kg	339,00 £
II P-STB-158CAF	44x35x158 cm   148 kg	339,00 £



#### Standing Buddha<sup>1</sup>

Standing Buddha, Indian, 80 cm and 100 cm H | Stone casting, hand finished & colored

Article no.	approx. size   approx. weight	RRP
P-STB-080AF	23x21x80 cm   30 kg	109,90 £
I P-STB-100AAF	28x24x100 cm   50 kg	139,90 £



#### Standing Buddha<sup>1,2</sup>

Standing Buddha, Indian, 192 cm H | Stone casting, hand finished & colored

Article no.	approx. size   approx. weight	RRP
PL-STB-190AAF	51x30x192 cm   190 kg	529,00 £

<sup>1</sup> The colors vary and may fade as a result of weathering.

<sup>2</sup> Manufactured to save weight in the hollow casting process.



**Sitting Buddha**<sup>1,2</sup>

Sitting Buddha, Japanese, 30 cm and 40 cm H | Cast stone, hand-refined & colored

Article no.	approx. size   approx. weight	RRP
P-SB7-040AF	36x25x40 cm   23,4 kg	82,90 £

**Sitting Buddha**<sup>1,2</sup>

Sitting Buddha, Japanese, 52 cm and 80 cm H | Cast stone, hand-refined & colored

Article no.	approx. size   approx. weight	RRP
PL-SB7-052AF	44x28x52 cm   22 kg	124,90 £
I PL-SB7-080AF	50x70x80 cm   76 kg	289,00 £







# *Monks*

The first monks are the five ascetics which Buddha left as he turned away from the path of extreme asceticism.

Our monks, who like nuns in the Christianity plays an important role in today's Buddhism, are often very childlike represented and fascinate us in a very special way.



**Lying monk**<sup>1,2</sup>

Lying monk, 60 cm and 80 cm L | Cast stone,  
hand-refined & colored

Article no.	approx. size   approx. weight	RRP
II PL-LM-060AF <sup>2</sup>	61 x 40 x 32 cm   34,5 kg	139,00 £
III PL-LM-080AF <sup>2</sup>	80 x 57 x 41 cm   73 kg	255,00 £

**Sitting monk**<sup>1,2</sup>

Sitting monk, 47 cm and 80 cm H | Stone casting, hand finished & colored

Article no.	approx. size   approx. weight	RRP
PL-SM-047AF <sup>2</sup>	47 x 35 x 37 cm   24,5 kg	96,90 £
PL-SM-080AF <sup>2</sup>	60 x 60 x 80 cm   66 kg	299,00 £

**Standing monk**<sup>1</sup>

Standing Monk, praying, with hat, 60 cm H |  
Stone casting, hand finished & colored

Article no.	approx. size   approx. weight	RRP
P-STMOHAT-060AF	27 x 22 x 60 cm   25 kg	142,90 £

**Sitting monk, laughing**<sup>1</sup>

Sitting monk, laughing, 55 cm H | Stone casting, hand finished & colored

Article no.	approx. size   approx. weight	RRP
PL-SMA-055AF <sup>2</sup>	55 x 50 x 50 cm   68 kg	229,00 £

<sup>1</sup> The colors vary and may fade as a result of weathering.

<sup>2</sup> Manufactured to save weight in the hollow casting process.

# *Elephant God Ganesha*



Ganesha, the god with the elephant head, is one of the most famous and beloved gods of the Hindus. Around his broken tusk, the most varied legends and myths entwine. He stands for luck and success in all endeavors, embodies intelligence and wisdom. Not only a perfect jewelry for home and garden, but also an ideal gift for collection!

1 The colors vary and may fade as a result of weathering.

2 For weight savings in  
Hollow casting produced.

3 With relief on the back





**Standing Ganesha**

Standing Ganesha, 60 cm | Natural stone (boulder), stonework

Article no.	approx. size   approx. weight	RRP
RS-STGA-060NA	30x25x60 cm   34 kg	359,00 £



**Standing Ganesha<sup>3</sup>**

Standing Ganesha, 70 cm and 120 cm H | Natural stone (basanite), stonework

Article no.	approx. size   approx. weight	RRP
CST-STGA01-120NA	45x35x120 cm   105 kg	409,90 £



**Sitting Ganesha<sup>1,2,3</sup>**

Sitting Ganesha, 70 cm H | Stone casting, hand finished & colored

Article no.	approx. size   approx. weight	RRP
PL-GA-070AF <sup>2,3</sup>	45x40x70 cm   100 kg	265,00 £



**Sitting Ganesha<sup>1</sup>**

Sitting Ganesha, 40 cm H | Stone casting, hand finished & colored

Article no.	approx. size   approx. weight	RRP
P-GA-040AF <sup>3</sup>	30x23x40 cm   22 kg	78,90 £



## *Japanese lanterns and more...*

Set style-conscious accents in your Japanese or Asian garden. While the Japanese garden lantern is usually used only as an object without lighting, with simple means you can light up the lantern.



### **Slotted garden lantern<sup>1</sup>**

Garden lantern, 2-part, slotted, with cover, 45 cm and 55 cm H  
| Natural stone (boulder), ground

Article no.	approx. size   approx. weight	RRP
RS-GL-2-45	25 x 20 x 45 cm   40 kg	129,00 £
RS-GL-2-55	30 x 25 x 55 cm   60 kg	164,90 £

<sup>1</sup> For multi-part articles, the individual parts may contain different shades.

<sup>2</sup> The items of multi-piece stone lanterns should be on Bonded for better stability.

<sup>3</sup> The colorations vary and may fade as a result of weathering.





**Japanese stone lantern model "Kasuga"**<sup>2,3</sup>

Jap. Garden lantern, approx. 80 cm H | Stone casting, hand finished & colored

Article no.	approx. size   approx. weight	RRP
P-GL04-080AF	35 x 35 x 80 cm   28 kg	189,00 £
P-GL-04-120af	40 x 40 x 120 cm   85,5 kg	319,00 £



Uniques made of natural stone may deviate from the picture.

# Chinese warriors and more...



The world-famous terracotta army served as inspiration for our sculptures of Chinese warriors.

The Terracotta Army, an early Chinese imperial burial gift from 210 BC Was discovered by accident in 1974 and caused a worldwide sensation.

1 The colors vary and may fade as a result of weathering.



## Chinese warrior<sup>1,2,3</sup>

Chinese warrior, standing, 100 cm H | Cast stone, hand-refined & colored

Article no.	approx. size   approx. weight	RRP
PL-CHWST-100AF	50 x 40 x 102 cm   69 kg	255,00 £



## Chinese warrior<sup>1</sup>

Chinese warrior, kneeling, 100 cm H | Cast stone, hand-refined & colored

Article no.	approx. size   approx. weight	RRP
I P-CHWKN-100AF	40 x 59 x 102 cm   155 kg	342,90 £

2 Manufactured to reduce weight in the hollow casting process.





**Chinese warrior<sup>1</sup>**

Chinese warrior, standing, 120 cm, 150 cm and 175 cm H |  
Stone casting, hand finished & colored

Article no.	approx. size   approx. weight	RRP
I P-CHWST-150AF	45 x 40 x 150 cm   154 kg	415,00 £
II P-CHWST-175AF	50 x 40 x 175 cm   242 kg	629,00 £



**Temple Lion<sup>1</sup>**

Temple Lion set of 2, 40 cm and 60 cm H | Cast stone,  
hand-refined & colored

Article no.	approx. size   approx. weight	RRP
I P-TL-040AF	25 x 36 x 40 cm   84 kg	179,90 £
II PL-TL-060AF <sup>2</sup>	35 x 45 x 60 cm   90 kg	299,00 £

<sup>3</sup> Without decoration

# MOAI

## *The stone colossi of Easter Island*

The imposing stone giants of Easter Island are a fascinating testimony to a bygone culture. They were carved from volcanic tufa 1 to 2 millennia ago and worshiped divine ancestors. The giant figures are still considered one of the greatest myths of our humanity. No matter if you choose the massive stone cast or the partially hollow cast stone giants, the Moai will enrich your garden.



### Moai Head <sup>1,2</sup>

Moai head, 40 cm, 60 cm, 100 cm, 120 cm, 150 cm H | Stone casting, hand finished & colored

Article no.	approx. size   approx. weight	RRP
PL-MOAI-040AF	24 x 31 x 41 cm   17,4 kg	79,90 £
PL-MOAI-060AF	40 x 35 x 60 cm   25 kg	139,90 £
PL-MOAI-100AF	47 x 44 x 100 cm   60 kg	299,00 £
PL-MOAI-120AF	54 x 48 x 120 cm   81,5 kg	345,00 £
PL-MOAI-150AF	60 x 50 x 150 cm   138 kg	579,00 £





**Moai head**

Moai head, 50 cm, 75 cm, 100 cm H | Natural stone (basanite), stonework

Article no.	approx. size   approx. weight	RRP
CST-MOAI-050NA	22x18x50 cm   28 kg	119,90 £
I CST-MOAI-075NA	28x22x75 cm   75 kg	236,90 £
II CST-MOAI-100NA	30x30x100 cm   120 kg	344,90 £

**Moai head**

Moai head, 120 cm, 150 cm and 200 cm H | Natural stone (basanite), stonework

Article no.	approx. size   approx. weight	RRP
III CST-MOAI-120NA	40x36x120 cm   170 kg	479,90 £
IV CST-MOAI-150NA	50x45x150 cm   450 kg	786,00 £
CST-MOAI-200NA	60x55x200 cm   900 kg	1.690,00 £

1 The colors vary and may fade as a result of weathering.

2 Manufactured to save weight in the hollow casting process.

For items made of natural stone, there may be deviations from the illustration | Illustration and size may vary slightly.



# Sound & wind Chimes

Once in Bali, you will never forget the wonderful sound of this island. For this reason, you will find here a nice-sounding selection of simple and beautiful wind chimes. These are made on the Green Island of the Gods by our artists and suppliers.



## Wind chime "Bali"

Wind chime „Bali“, 40 cm, 50 cm and 80 cm | Bamboo and coconut

Article no.	approx. size   approx. weight	RRP
BA-WSP-040NA	12 x 12 x 55 cm   0,3 kg	11,30 £
BA-WSP-050NA	15 x 15 x 65 cm   0,4 kg	14,90 £
BA-WSP-080NA	17 x 17 x 95 cm   0,5 kg	29,90 £





## Bamboo canes and elements

All our pipes are pierced as part of the insect protection treatment and coated with a 2-component acrylic polyurethane paint for improved weather resistance and UV stability.



### Coloring yellow-brown

#### Bamboo rod S "Apus" <sup>1,2</sup>

Bamboo stick „Apus“ Gigantochloa apus, yellow-brown, slightly conical, painted

Article no.	approx. size   approx. weight	RRP
BA-STICK-SMALL-180YE	ø 3 - 5 cm, 180cm L   0,75 kg	4,90 £

#### Bamboo pole M "Apus" <sup>1,2</sup>

Bamboo "Apus" Gigantochloa apus, yellow-brown, slightly conical, painted

Article no.	approx. size   approx. weight	RRP
BA-STICK-MED-200YE	ø 6 – 8 cm, ca. 200 cm L   2,8 kg	15,90 £
BA-STICK-MED-300YE	ø 6 – 8 cm, ca. 300 cm L   4 kg	20,90 £

#### Bamboo stick L "Petung" <sup>1,2</sup>

Bamboo "Petung" Dendrocalamus asper, tawny, very slightly conical, painted

Article no.	approx. size   approx. weight	RRP
BA-STICK-LARGE-200YE	ø 9 – 11 cm, ca. 200 cm L   9,5 kg	38,90 £
BA-STICK-LARGE-300YE	ø 9 – 11 cm, ca. 300 cm L   13,5 kg	51,90 £



### Rigid fence element Model "Surabaya"

The bamboo fence elements from the series Surabaya is rigidly connected. That is, we have elements of tree-bus tubes that have been drawn at different heights (levels) on a bamboo or wooden axis - similar to beads on a string. In most cases, with 180 cm high elements, we have three axis planes that are rigidly connected to this bamboo or wood axis and thus provide sufficient rigidity (stability). The two outer bamboo poles are fixed on all levels to the bamboo or wood axis by means of bamboo dowels.

#### Bamboo fence element rigid "Surabaya" <sup>1,2</sup>

Bamboo fence element „Surabaya“, rigidly connected (rigidly on 3 levels), lacquered, slightly conical, yellow-brown in 180 cm H

Article no.	approx. size   approx. weight	RRP
BA-SURYE2-090X180X5	Ø 3 - 5 x 90 x 180 cm   20 kg	110,90 £

# Material Science

**BASANIT NATURE** From this lava stone most of the sculptures are made by our artists. The clay minerals contained in the rock, mostly chlorides, give the basanite its characteristic greenish shimmering color. With a little luck, fragments of other types of rock can also be found in the raw material. Basanit sculptures are frost resistant, but not saltwater resistant. Tausalz dissolves the structure of the stone in basalts. During the frost period you should make sure that the figure is not in the water, but on a gravel bed.

**RIVER STONE** Also called Riverstone. This rock is to be assigned to the same group of rocks as granite, thus still many times denser and harder than lava stone. To work on the river stone requires more strength and skill. Due to the hardness of the rock, the artists can elaborate this much more detailed and thus finer.

Achieve results. By the way, we can also provide the boulder with an antique finish. During the frost period you should make sure that the figure is not in the water, but on a gravel bed.

**STONEWALK** A handmade original provides the template here. It will create a mold, which is then poured with artificial stone. After drying, the mold is carefully removed and the blank reworked. Finally, the Antikfinish is applied by hand. The result is absolutely authentic sculptures at fair prices. During the frost period you should take care that the figure is not in the water, but on a gravel bed.

**LAVASTEIN - andesite** Borobudur, one of the largest Buddhist temples in Southeast Asia, was built from this rock. Its greyish appearance and larger pores, which are responsible for a rough surface, only slightly differentiate the lava stone from the basanite. It is frost resistant and can also contain fragments of other types of rock, which is typical of a volcanic rock. During the frost period you should make sure that the figure is not in the water, but on a gravel bed.

**GRP** Glass-fiber reinforced plastic, short GRP, is a fiber-plastic composite of a plastic and glass fibers. Glass fiber reinforced plastics are a very high quality fiber-plastic composite.

GRP has excellent corrosion behavior even in aggressive environments. This makes it a suitable material for water features of any kind.

**BAMBOO** For outdoor use, we recommend an oil-based protective paint. The use of a glaze or a care oil reduces the cracking of the bamboo in the dried state and especially by large climatic variations. However, these cracks do not change the stability of a bamboo cane. It is best to clean the bamboo in a dry weather period so that it dries completely and then apply the paint. Alternatively, you can sand the bamboo and then paint it. Repeat this care and preservation measure approximately every 1-2 years. If you drill your bamboo pipes, water that has penetrated can run off. Avoid large variations in temperature and slowly adjust your indoor bamboo product to the warm room temperature.

We can not give a guarantee on bamboo poles or pipes. It is a natural product in which the following points (not exhaustive) are not grounds for complaint:

1. Bamboo tubes can rupture due to temperature fluctuations. It can form fine cracks up to the gap.
2. Color differences may occur. Any fire are the results of the heat under which the bamboo poles were pulled straight after harvesting when needed straight.
3. Bamboo can have bumps and bends and are by nature not a standard straight bar.
4. The diameter of the bamboo poles is different. you rejuvenate from bottom to top. The design of the Diameter is made at the lower, thicker end of the bamboo pole. We have made both our length and diameter specifications to the best of our knowledge and belief. Nevertheless, it is about Ca. dimensions that may differ.

---

## Hydrophobilize

The hydrophobing is a water-repellent preservation measure. Stones that come into permanent contact with water, such as our wells or stone bowls, should be struck with a suitable medium. The hydrophobizing agent occupies the inner pore and capillary surfaces, making them water repellent. The pores and capillaries are not closed, i. the diffusibility (breathability) of the stone remains virtually unchanged. In trade, the means of hydrophobing are also found under the term „Farbvertiefer“.





**GORSE LODGE**

IMAGINED, DESIGNED & CRAFTED FOR YOUR GARDEN



**ASIASTYLE**

buddha and more





## Stone sculptures

In a stone farming village in Indonesia, our workshops and artists create the unique sculptures that inspire us and our customers. These handmade single pieces are made from the rock Basanit, which is mined in a quarry and further processed by our manufactories. The basanite is a igneous rock, which receives a characteristic greenish color due to the contained minerals, mostly chlorides. The uneven nature of the surface is due to the formation

of basanite. For these are fragments of other types of rock, which were entrained in a volcanic eruption in the lava flow. If you prefer an optically darker and more even surface, our sculptures with the Antikfinish finishing are recommended. In this process, the surface is slightly colored, but this can wash off over time. Our basanite and boulder sculptures can be outdoors in any season, as they are absolutely weather and frost resistant.



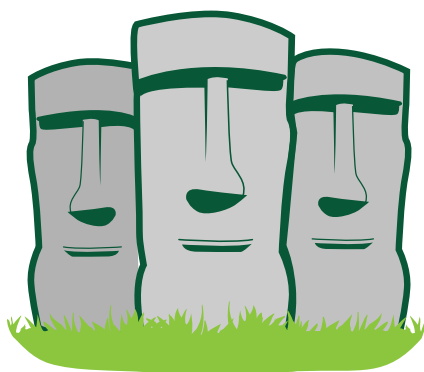






# ASIASTYLE

buddha and more



## GORSE LODGE

 IMAGINED, DESIGNED & CRAFTED FOR YOUR GARDEN

*[www.asiastyle.ie](http://www.asiastyle.ie)*

GORSE LODGE, KILWORTH, CO. CORK, REP. OF IRELAND.

James Dunne

**+353 87 9261023**

Email: [james@gorselodge.ie](mailto:james@gorselodge.ie)

Declan Dunne

**+353 87 2512542**

Email: [declan@gorselodge.ie](mailto:declan@gorselodge.ie)

### Headquarters

Asiastyle GmbH  
Gaster Straße 3 D  
49504 Lotte  
Germany

[www.asiastyle.eu](http://www.asiastyle.eu)

### Business co-operation:

**bam**  
**boo**  
concepts